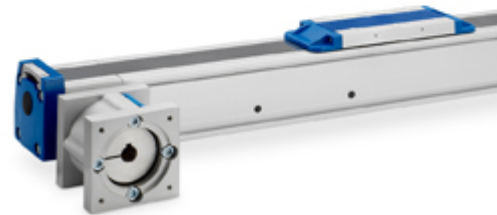




## TECHNICAL ARTICLE

# Flexible Residential Construction Prototype Benefits From Linear Motion Systems

To combat the issues of infrequent room use, high real estate prices, energy consumption increases and environmental sustainability degradation, a group of Virginia Tech University engineering faculty and students built a fully functioning smart house prototype. Rooms can be reconfigured on command by touch, voice, gesture or smartphone. A recent article took a closer look at the FutureHaus project, including the use of Thomson electric linear motion systems, which help move room-sized, load-carrying walls smoothly and quietly. For example, in the image shown, the left side of the living room wall slides into the living room to open the home office during the day. A screen on the partition rotates to provide teleconferencing for home office or entertainment in the living room. Click below to read the full article to learn more about the project.



*The Thomson Movopart M55 linear system with RediMount™ motor mounting adapter allowed the FutureHAUS team to smoothly move walls and add about 3 metres of living room space.*

[READ THE FULL ARTICLE](#)

[SIZE AND SELECT THE OPTIMAL LINEAR MOTION SYSTEM](#)

## How To Optimize Machine Designs With Customized Ball Screws

[Register for the webinar](#)

It's not uncommon when designing for

linear motion applications that a standard ball screw or nut simply won't fit your requirements. In these instances, working with a manufacturer on a customized ball screw assembly can deliver you the "just-right" solution. **Join our webinar on 29 April 2021**, and you'll learn about the modification and optimization options available to you and how they can improve your machine's performance.



**REGISTER NOW**

## Discover Your Next Linear Bearing Solution In Only Minutes

**Try our new online selector tool**

When your machine design requires a specific type of linear bearing, it can sometimes be time-consuming and frustrating to find the exact model – especially when choosing from the world's largest selection of Linear Ball Bushing®, and FluoroNyliner® and Roundway® bearings. The enhanced online Thomson selector tool for linear bearings addresses this problem, simplifying the search and selection process to help you identify the right part and get a 3D model FAST.

**OVERVIEW | LITERATURE | FIND A PRODUCT | CAD MODELS**

- Bushing Only Open**  
For continuously supported applications
- Bushing Only Closed**  
For end supported applications
- Flange Block Bushing, Open**  
For continuously supported applications
- Flange Block Bushing, Closed**  
For end supported applications
- Flanged**  
For end supported applications
- Ball Bearings**  
For high speed or high speed applications that must be compensated with dust or debris
- Standard**  
For most applications
- Corrosion Resistant**  
For applications where corrosion is present
- Washdown**  
For applications where washdown is required
- High Temp (>185°F)**  
For applications in which temperatures exceed 185°F

**FILTER RESULTS** Clear All 17 Recommended Products All Products

**Min. Dynamic Load Capacity** **Bushing Only Closed, Corrosion Resistant, Metric** **Corrosion Resistant**

Options ID	Overall Length	OD	Part Number	Bearing Unit Price	Lead Time	Order Quantity	Stock Price Per Unit
5 mm	193 N	22 mm	SHW10-CR	25.92 €	20 Days	10	5 MM 55 CTL
8 mm	271 N	28 mm	SHW12-CR	36.21 €	3 Days	10	8 MM 55 CTL
12 mm	581 N	32 mm	SHW16-CR	26.91 €	5 Days	10	12 MM 55 CTL
16 mm	1040 N	38 mm	SHW20-CR	38.01 €	5 Days	10	16 MM 55 CTL
20 mm	1800 N	45 mm	SHW25-CR	102.08 €	5 Days	10	20 MM 55 CTL

**TRY THE NEW SELECTOR TOOL**

Share via Social Media

